



**ABHEE**  
**Natura**

---

Whitefield Extension

# Balance beyond boundaries.

//

Balance your dreams with roots that stay,  
let your restless mind find a quiet bay.  
Where earth meets hope in gentle embrace,  
and time moves with an unrushed grace.  
Balance your life with visions that last,  
secure tomorrow while living vast.  
Let peace and potential softly entwine,  
as your land and life align in rhyme.

//



# Where balance finds its ground.

In a world that moves faster by the day, real balance starts with where you invest. Presenting Abhee Natura, a highly sought-after opportunity to own land on the fast-developing Whitefield extension, Soukya Road corridor, where urban accessibility meets long-term growth.

This 4-acre nature infused gated premium plotted development isn't just about owning land; it's about owning your future. With 49 premium ready-to-register branded plots, this is where peace of mind meets portfolio strength.

Whether you're diversifying your investments or laying the foundation for your dream home, land here offers high potential, low risk, and total flexibility. With seamless connectivity to major IT hubs, Hope Farm Metro, Satellite Town Ring Road (2025), Peripheral Ring Road (2027), and Outer Ring Road Metro Line (2031), this is an address that promises future-ready appreciation.

Invest in perfect balance today, for a life that is grounded in nature and poised for growth.

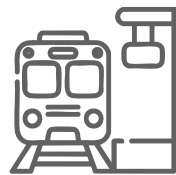




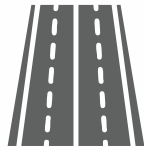
**Where modern living**  
meets nature's calm balance.



**4 acres of gated premium**  
plotted  
development



**15 mins from**  
Hope Farm Metro Station,  
Whitefield



**Easy access to**  
upcoming  
STRR and PRR



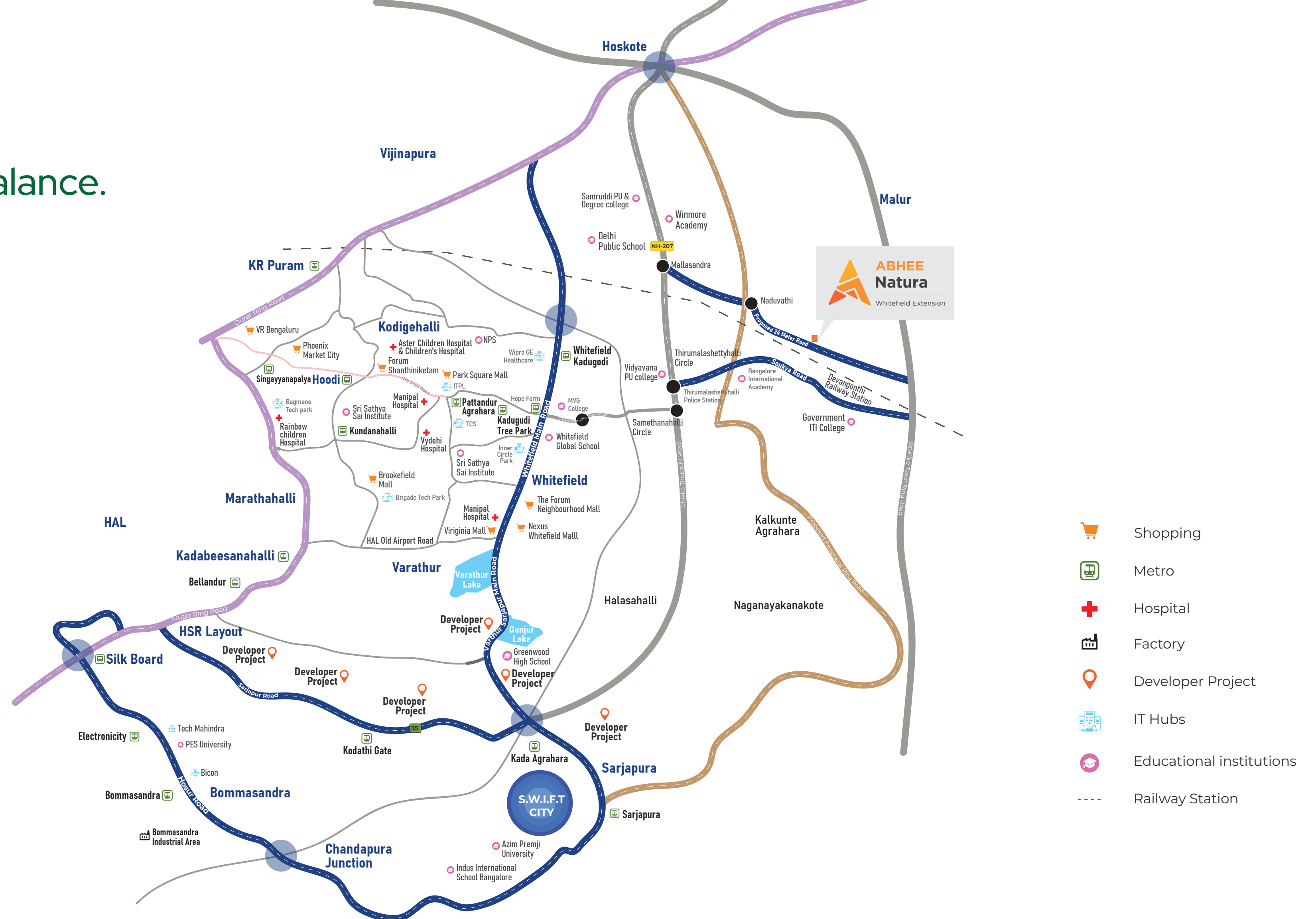
**49 premium**  
ready-to-register  
branded plots



**1200 and 1500 sq. ft.**  
plots

100

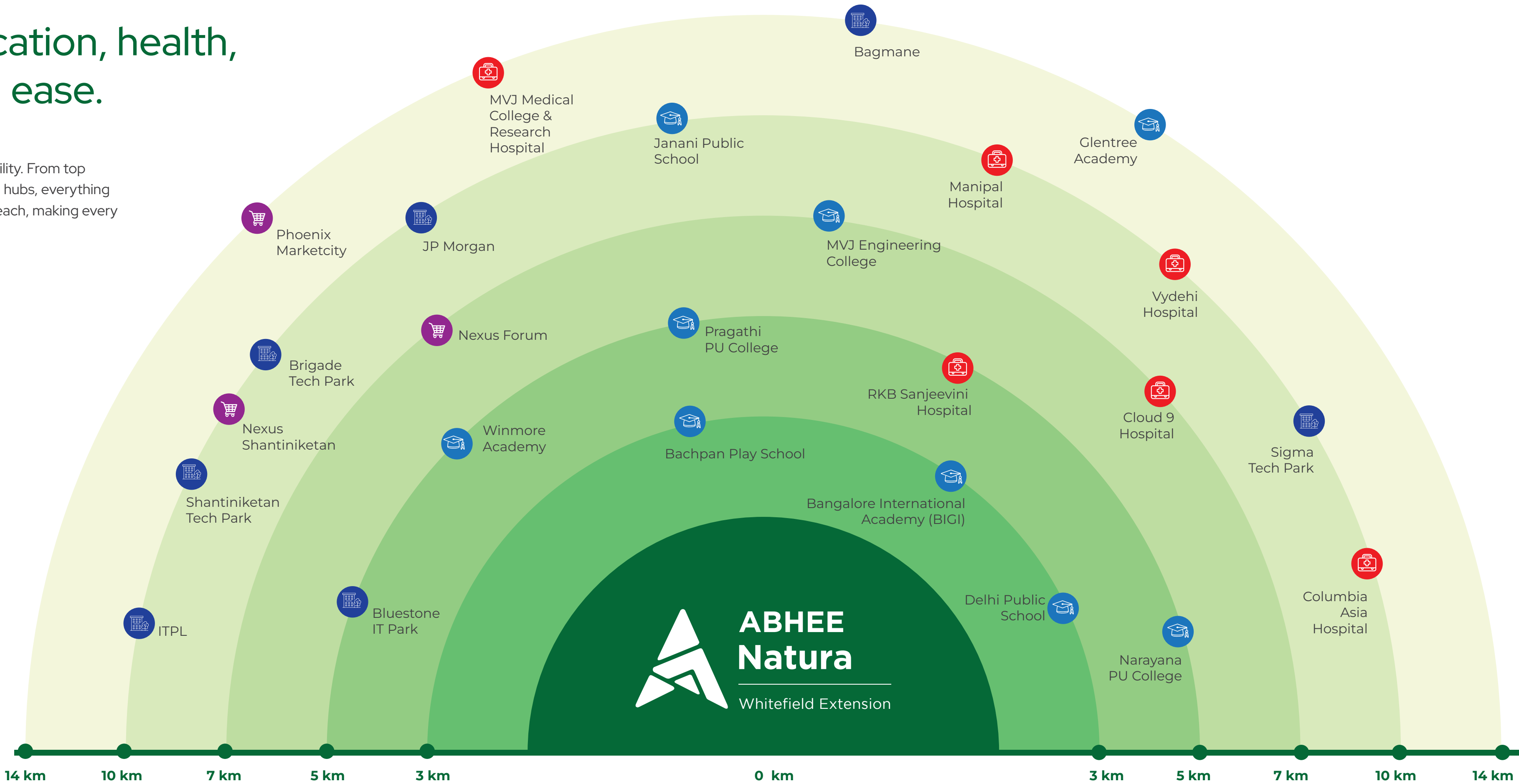
Live where clean air and peace surround you, yet unmatched city conveniences are moments away. This is a neighbourhood designed to nurture your health, mind, and life's ambitions.



# Balance education, health, and work with ease.

Step into a world of seamless accessibility. From top schools and hospitals to powerful tech hubs, everything your family needs is within effortless reach, making every day efficient and stress-free.

- Education
- Healthcare
- Shopping Malls
- IT Hubs





# Whitefield: Bengaluru's billion-dollar growth cornerstone.

Once a quiet suburb, Whitefield has transformed into Bengaluru's global tech hub with unmatched connectivity. It isn't just a location, it's a landmark of progress and powerful long-term potential.



Home to global giants like IBM, Oracle, SAP & Accenture

---



2L+ strong tech talent pool driving demand

---



\$190B+ revenue generated (2022)

---



7x land price growth  
₹2,000/sq.ft. in early 2000s  
to ₹15,000+ today

---



# Future of Whitefield bigger, bolder, bankable.



## Tech Expansion

₹3,000 Cr.  
Tata Intellion Park  
+ 10 upcoming  
tech parks.



## Talent Influx

50,000+  
new jobs in  
3–5 years across AI,  
cloud, GCCs.



## Value & Connectivity

Metro Phase II,  
strong pre-sales,  
and rising rentals.



# How Soukya Road balances tomorrow's promise, today?

Strategically positioned with upcoming metro lines and ring roads, Soukya Road offers unmatched connectivity, rapid development, and a peaceful ambience, making it the perfect place to own your plot for a flourishing tomorrow.

## SOUKYA ROAD

### **Metro Expansion:**

The upcoming Bengaluru Metro Phase 2A (blue line) will span 18.2 km, connecting KR Puram to Central Silk Board along the Outer Ring Road with 13 stations. Expected completion: 2026, a major leap in city-wide connectivity.

### **Peripheral Ring Road (PRR):**

The upcoming 116 km PRR will enhance Soukya Road's connectivity to major highways like Bellary Road, Old Madras Road, and Tumkur Road, ensuring faster, smoother inter-city travel.

### **Satellite Town Ring Road (STRR):**

This 290 km stretch will seamlessly link Soukya Road to Bengaluru's satellite towns, cementing its position as a rapidly emerging, well-connected growth corridor.



# How Soukya Road balances tomorrow's promise, today?

Strategically positioned with upcoming metro lines and ring roads, Soukya Road offers unmatched connectivity, rapid development, and a peaceful ambience, making it the perfect place to own your plot for a flourishing tomorrow.



Residential property prices along Soukya Road: ₹6,535 to ₹8,495 per sq. ft.



Land values appreciated by 20–25% over the past 3 years.



Annual appreciation rates: 8–10%, driven by rapid development and proximity to IT hubs like Whitefield.



Average 2 BHK rents climbed from ₹18,000 to ₹26,000—a 44% increase since 2021.



# Balanced living with thoughtful community amenities.

Step into a gated community where every amenity is designed to nurture wellness, peace, and joy. From meditation decks to lush gardens, find spaces that balance body, mind, and spirit.

Dense tropical planting



Jogging track



Chit-chat area



Terminalia mantaly tree court



Pergola with seats



Bamboo garden



Meditation deck



Outdoor gym area



Children's play





# Master plan designed to add balance to your life.

Experience a thoughtfully curated master plan that seamlessly integrates nature, connectivity, and community, ensuring your home adapts to every chapter of life.

- 1. Trees with Shrubs
- 2. Palm Groves
- 3. Gathering Plaza
- 4. Jogging Track
- 5. Lawn
- 6. Gazebo Pavilion
- 7. Zen Garden
- 8. Floral Garden
- 9. Plumeria Court with gravel Garden
- 10. Meditation Deck
- 11. Terminalia Mantaly Court
- 12. Bamboo Garden

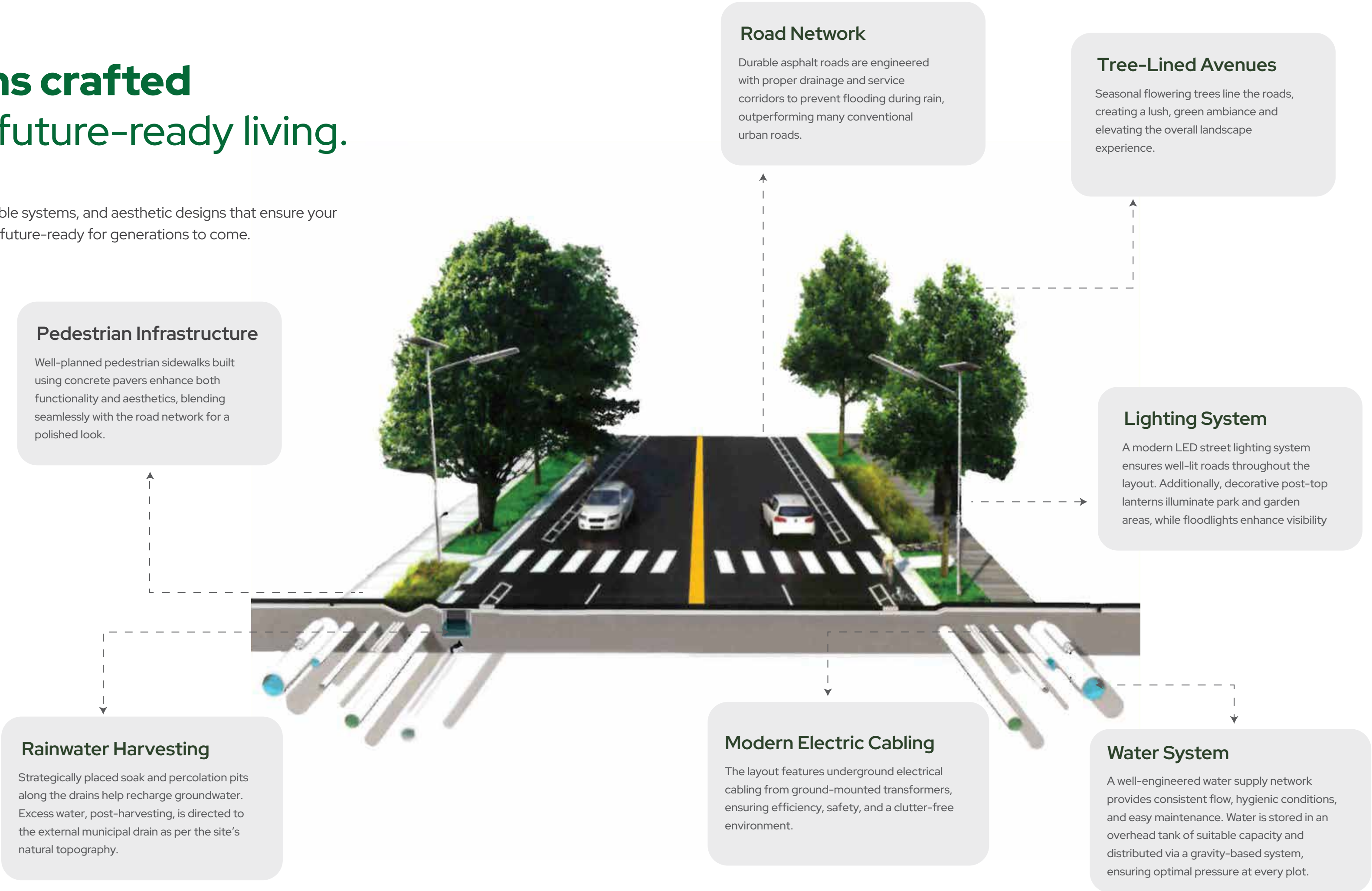
- 1. Trees with Shurbs
- 2. Palm Groves
- 3. Gathering Plaza
- 4. Jogging Track
- 5. Lawn
- 6. Gazebo Pavilion
- 7. Floral Garden
- 8. Bamboo Garden
- 9. Chit Chat Area
- 10. Kid's Play Area





# Specifications crafted for balanced, future-ready living.

Discover robust infrastructure, sustainable systems, and aesthetic designs that ensure your community is functional, beautiful, and future-ready for generations to come.





# Why invest in land?



## High Flexibility

Build a home,  
set up a business,  
or hold for the future.



## No Depreciation

Land stays intact.  
It doesn't age or  
wear out.



## Rising Demand

As cities grow,  
so does the need  
for land.



## Portfolio Diversification

Land lowers risk  
and cushions  
market swings.



## Low Maintenance

Land comes with  
almost zero  
upkeep.



## Easy to Buy & Sell

Enter or exit  
the market  
with ease.



# Why choose branded plots?



## Legal Clarity

Backed by the credibility of top developers.



## Security

Maintenance and surveillance are professionally managed.



## High Returns

Planned growth and premium infrastructure drive value.



## Sustainable Living

Enriched with lush open spaces and smart energy use.



## Thriving Communities

A well-planned, like-minded neighbourhood.



**BUILDING TIMELESS**  
HOMES WITH A VISION  
FOR THE FUTURE.

---





# TRANSFORMING BENGALURU SINCE 2009

---



3,500+  
Happy Families



16 Projects  
Completed



8 Ongoing  
Projects



7 Upcoming  
Projects





# OUR ONGOING PROJECTS

